

PLAN OF PROPOSED SUBDIVISION
OF ALL OF
LOTS 9 - 22, BLOCK 223
AND PART OF
LANE L1, PLAN NO. 102126563
NE 1/4, SEC 23, TWP 2, RGE 8, W 2 Mer
ESTEVAN, SASKATCHEWAN
BY: T. W. LUDDINGTON, SLS

2016
SCALE: 1:1000

DISTANCES ARE IN METRES AND DECIMALS THEREOF.
 DISTANCES ARE APPROXIMATE AND MAY VARY BY +/- 1.0m.
 AREA REFERRED TO IS OUTLINED BY A BOLD DASHED LINE AND CONTAINS:

- LOT 9A = 0.04 ha. (0.11 ac.)
- LOT 10A = 0.05 ha. (0.12 ac.)
- LOT 11A = 0.05 ha. (0.12 ac.)
- LOT 12A = 0.05 ha. (0.12 ac.)
- LOT 13A = 0.05 ha. (0.12 ac.)
- LOT 14A = 0.05 ha. (0.12 ac.)
- LOT 15A = 0.05 ha. (0.12 ac.)
- LOT 16A = 0.05 ha. (0.12 ac.)
- LOT 17A = 0.05 ha. (0.12 ac.)
- LOT 18A = 0.05 ha. (0.12 ac.)
- LOT 19A = 0.05 ha. (0.12 ac.)
- LOT 20A = 0.05 ha. (0.12 ac.)
- LOT 21A = 0.05 ha. (0.12 ac.)
- LOT 22A = 0.05 ha. (0.13 ac.)
- MUNICIPAL UTILITY MU1 = 0.02 ha. (0.06 ac.)

AREA OF LANE L1 TO BE CLOSED = 0.13 ha. (0.33 ac.)
 (ALREADY INCLUDED IN TOTAL)

TOTAL = 0.71 ha. (1.74 ac.)

CERTIFIED CORRECT THIS 26TH DAY OF MAY, 2016.

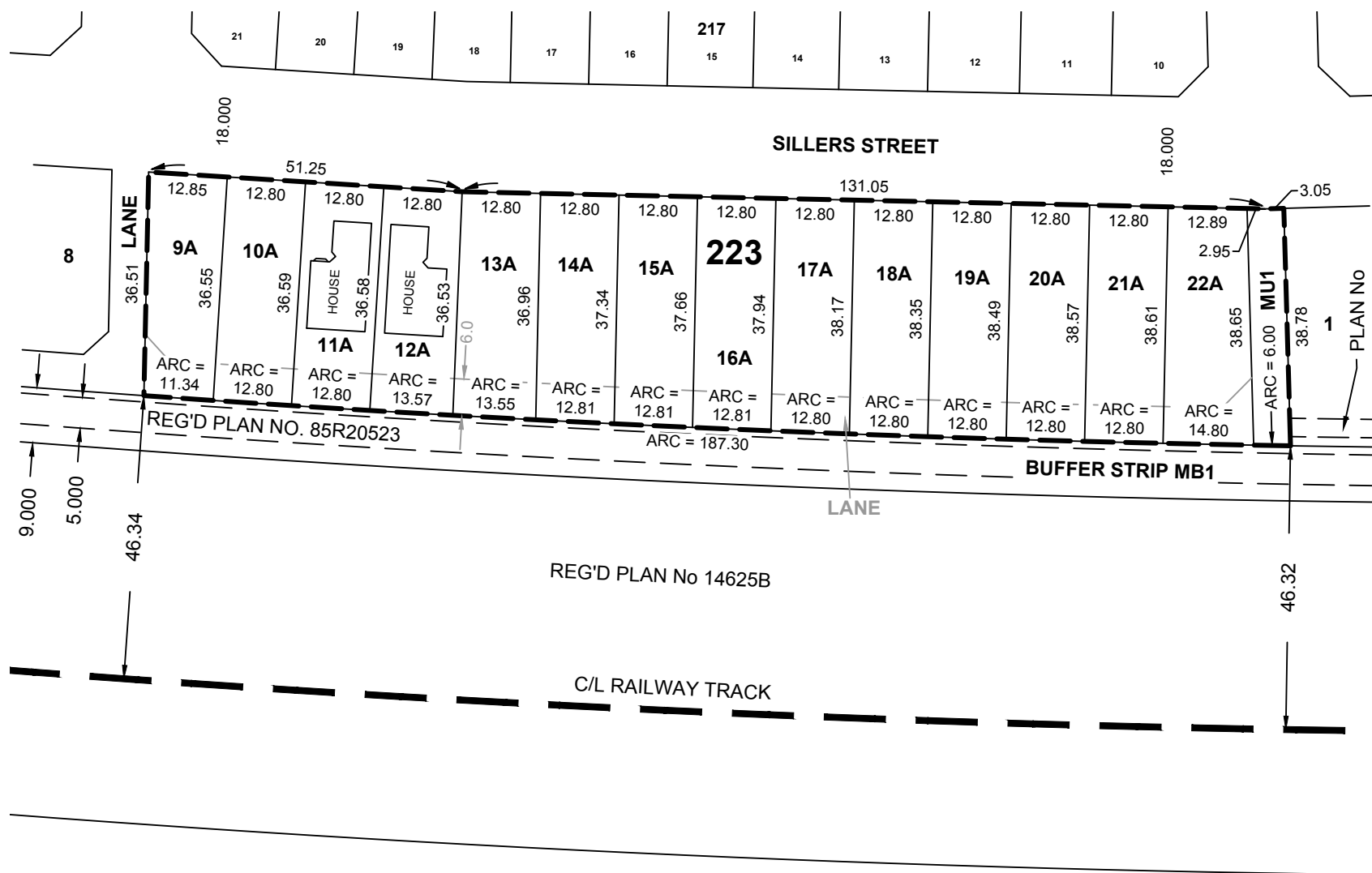
Trevor Luddington
 SASKATCHEWAN LAND SURVEYOR
 PREPARED BY MIDWEST SURVEYS INC.



OWNERS (Lots 9, 10, 12-22):
 101217590 SASKATCHEWAN

OWNERS (Lot 11):
 TENUVA BUSINESS DEVELOPMENT CORPORATION

OWNERS (Lane L1):
 Her Majesty the Queen in Right of Saskatchewan



NOTE: Positions of buried facilities shown are derived from interpretations of signals from electronic devices. Reception of electronic signals is subject to interference and has limitations, therefore it should not be assumed that all buried facilities are shown, and facilities which are shown should not be construed as "located" until physically exposed. All underground installations should be marked by the respective authorities prior to excavation or construction.
Saskatchewan First Call: 1-866-828-4888

